



The integration of third country nationals Challenges and priorities

Agnese Papadia, DG Migration and Home Affairs

Integration: why do we need to act?

The numbers

- **20 million** third country nationals in the EU
- **4%** of total population
- Migration reasons:
 - Family reunification
 - Work
 - Studies/research
 - International protection

The numbers

In 2015: high influx of asylum seekers

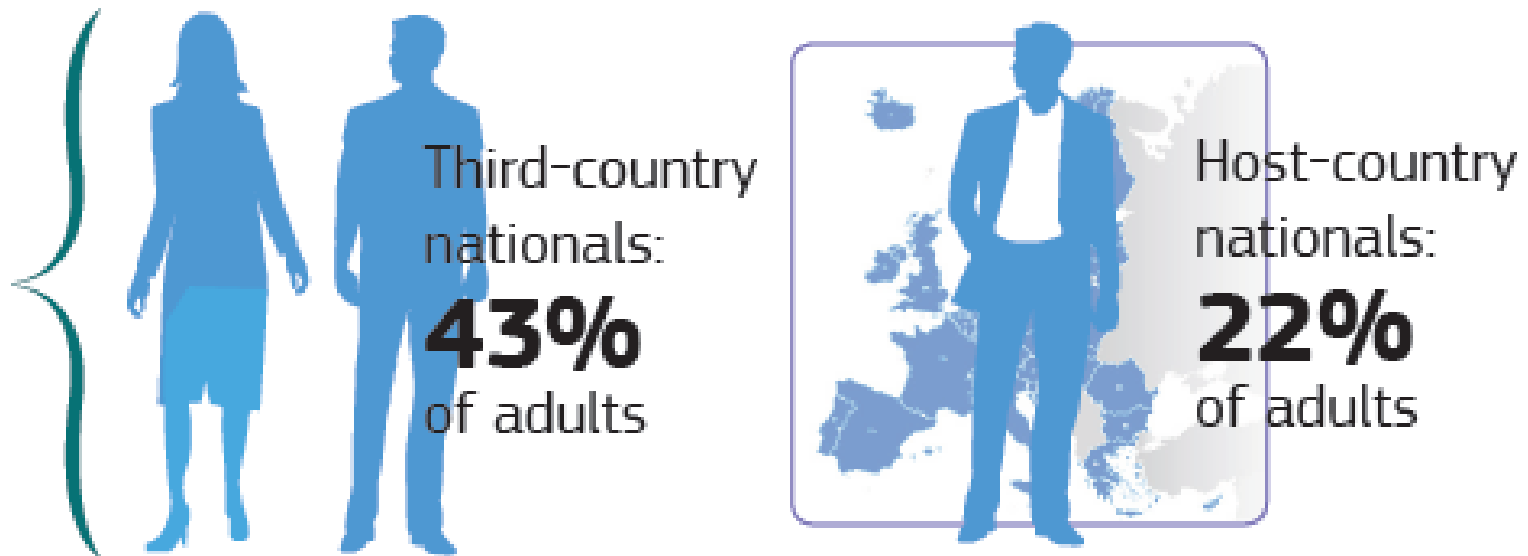
1,321,600 asylum applications

307,620 positive asylum decisions



The challenges

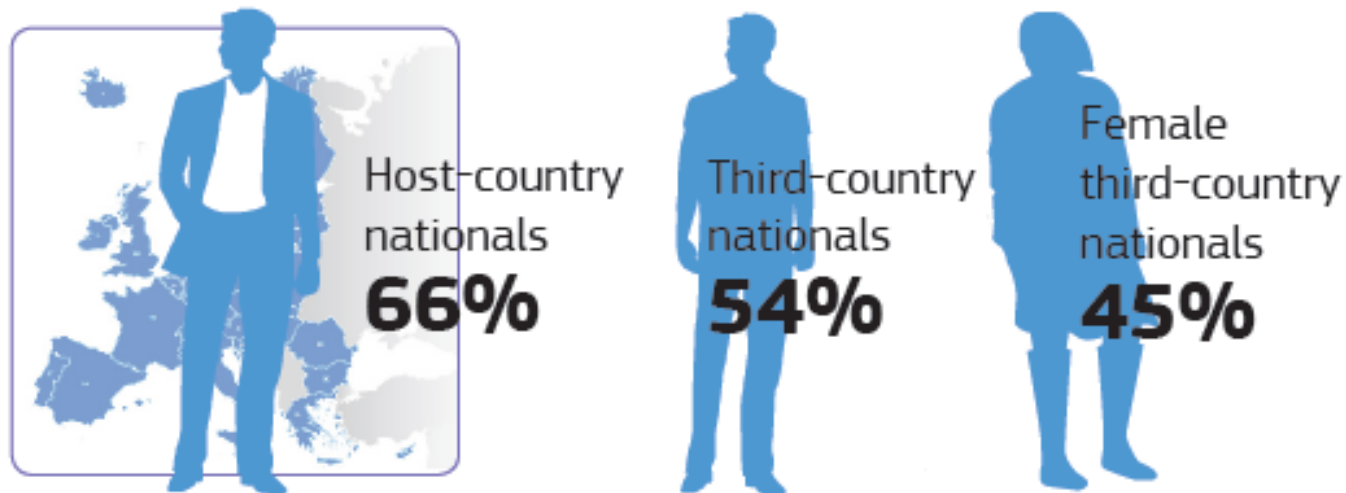
A lower education level compared with host country nationals



had not achieved upper secondary school level

The challenges

A lower employment rate, in particular for women



Percentage of the host-country nationals and third-country nationals employed in the EU in 2015 (working age 15 to 64)

Why do we need to act?

- Integration: a challenge and an opportunity
- Cost of non-integration
- Building more prosperous and cohesive societies

Integration: a key role for cities

- Migrants are more likely to live in (large) cities
- More than 60% of refugees worldwide live in urban areas
- Cities are places where migrants and non-migrants interact, be it through working, studying, living or raising their families
- The local dimension is the core of both the challenges and the solutions to address integration bottlenecks.

EU Action in the field of integration

- Common basic principles on integration
- Urban Agenda partnership on the inclusion of migrants and refugees
- Funding
- Exchanges of good practices
- European website on integration

Action plan on the Integration of third-country nationals

Identifies five priority areas:

1. Pre-departure/ pre arrival
2. Education
3. Labour market integration and access to vocational training
4. Access to basic services: health and housing
5. Active participation and social inclusion

Horizontal issues: gender, vulnerable groups (e. g. unaccompanied minors) and coordination between actors

Successful approaches

- Strategies that look at the same time at the short term and long term challenges and solutions
- Integrated approaches coordinating different policy areas and administrations
- Engagement of civil society as well as local businesses
- Promoting integration as a two-way process

Thank you!

For more information and successful practices on integration you can visit the European Website on Integration:

www.integration.eu

